



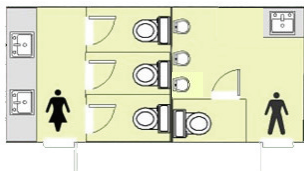
### Trailer Dimensions:

3.0m (H) by 2.3m (W) by 6.7m long. Please allow 1m for step placement

## Artist Series (3+1) Trailer

### Air-conditioned Artist Series Toilet Trailer features:

- 3 ladies toilets, 1 men's toilet and 3 urinals
- Light and spacious modern interior
- Raised designer hand basins
- High quality chrome taps
- High quality soaps and moisturisers
- Modern paper towel and toilet paper dispensers
- Full length mirrors in both the ladies and gents
- Internal external LED lighting
- Air conditioning for your comfort



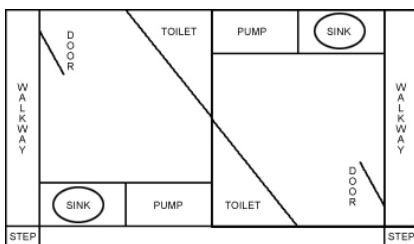
For an obligation free quote, call us today on (07) 5525 3545



For an obligation free quote, call us today on (07) 5525 3545

### DUO Twin Toilet Trailer

- Dimensions: 3.1m(H) x 2.2m(W) x 4.8m(L)
- Our Duo unit caters for approximately 100 guests (depending on event type).
- Ladies & Gentlemans facilities
- Fully Air Conditioned for your Comfort.
- Totally self-contained units, all that is required is a standard 240V electricity supply. No sewage or mains water connection is needed.
- Health and safety is a priority. All our units are fitted with slip-resistant flooring and non-slip access steps with hand rails.
- Internal & external LED lighting



### SOLO Toilet Trailer

- Large Tank Capacity
- Hand Basin with Soap, mirror and hand towel dispenser
- Translucent roof for excellent light, well ventilated
- Self-Closing Door with internal lock
- Hand braked trailer with levelling legs
- Slip-resistant flooring with hand rails.
- Internal and External LED Lighting
- Weight: Empty – 490kg / Full – 1050kg
- Trailer Dims: 2.9m (H) by 1.8m (W) by 3.4m (L)



**This Single Trailer mounted toilet is also available to be collected and returned to Splashdown QLD upon request.**